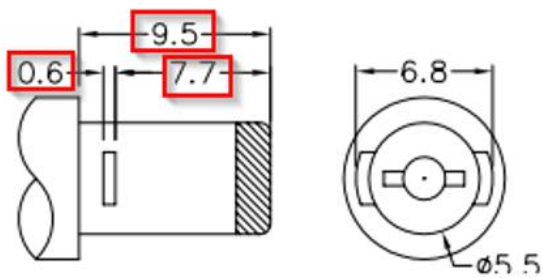
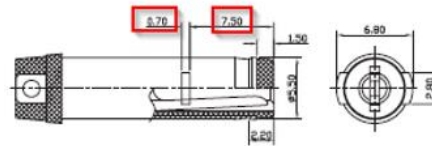


PREVIOUS CUI DEVICES DETAIL / IMAGE			NEW CUI DEVICES DETAIL / IMAGE		
	MATERIAL	PLATING	DESCRIPTION	MATERIAL	PLATING/COLOR
center pin	copper	nickel	center pin	brass	nickel
terminal 1	brass	tin	terminal 1	brass t=0.30	tin
terminal 2	copper alloy	tin	terminal 2	bronze t=0.25	tin
terminal 3	brass	tin	terminal 3	brass t=0.30	tin
plastic	PBT		cover	PBT (UL94V-0)	black
			housing	PBT (UL94V-0)	black



MATING PLUG
Jack Insertion Depth: 9.8 mm



MATING PLUG
Jack Insertion Depth: 9.5 mm

Affected Date Code: **02/28/2023**

Product Availability: *Pertaining to market availability*

PCN Approval:

Operations/Quality



Product Management

